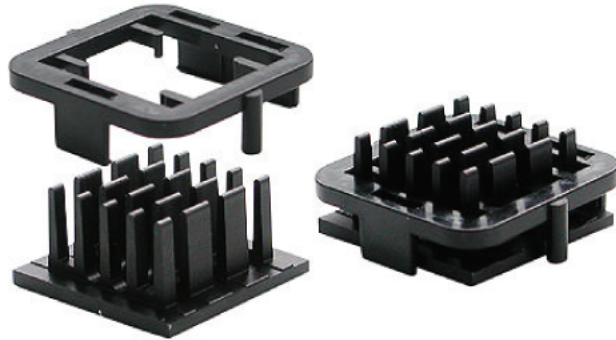


# Model Name: EBA21001-10-T410

## BGA Heat Sink For 21x21 Chip set

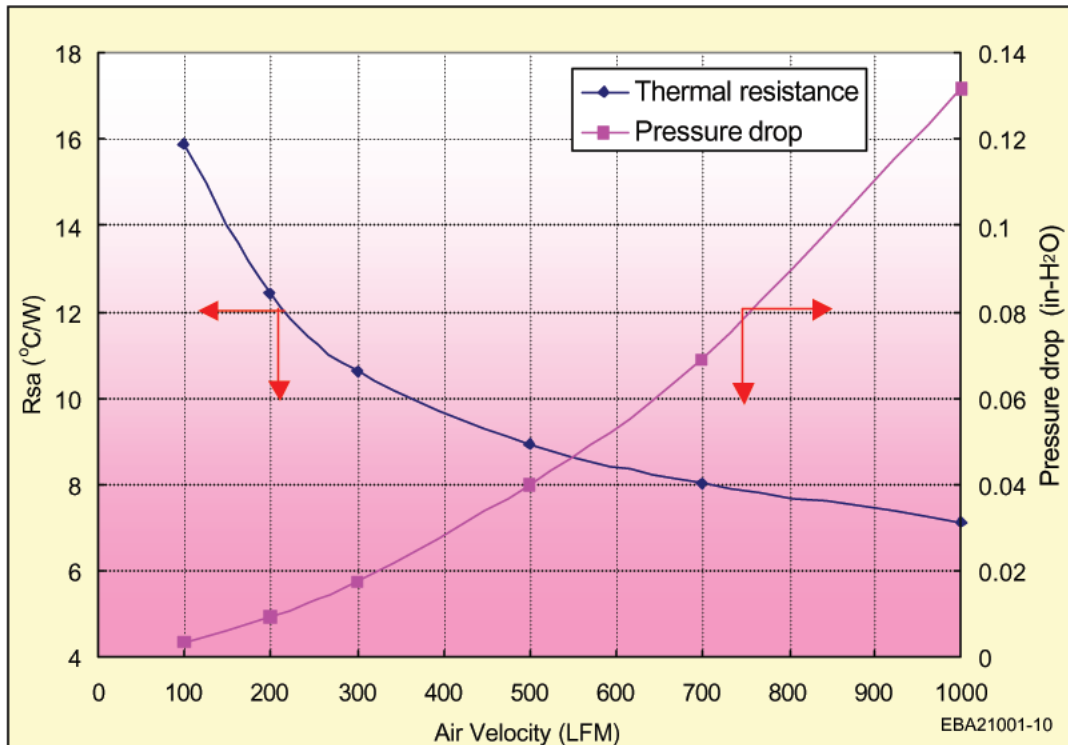
### \*Specification:

1. Material: Aluminum 6063
2. Weight: 4 gm
3. Technology: Extrusion
4. Finish: Black Anodize
5. Heat Sink Dimension: 20.7\*20.6\*9.7mm
6. Copper package and Moulding compound package available
7. Heat Source size: Uniform



8. T410 suffix = Chromerics T410 thermal interface pad

### \*Performance Data:



**AMERICAN THERMAL PRODUCTS**

Medland & Associates, Inc.

Tel: 408-269-4010

Fax: 408-267-7505

Email: [sales@medlandandassociates.com](mailto:sales@medlandandassociates.com)

[www.medlandandassociates.com](http://www.medlandandassociates.com)